



# HYCAT

Intelligent, fully integrated, and capable of being rapidly deployed, the Hycat is the solution for professional surveyors requiring high-quality data, reliability, and rapid deployment. The Hycat was designed to streamline survey logistics and easily navigate shallow and hard to access, remote locations.

Sensors have plug-and-play capabilities, allowing the Hycat to be easily customized to your site-specific needs.



DEPTH MEASUREMENT



WATER QUALITY STUDIES



DISCHARGE MEASUREMENT



HABITAT MAPPING



STRUCTURE INSPECTION



SEARCH & RESCUE

## Components Include:

Onboard Windows 10 Data Acquisition computer

Hemisphere A222 RTK compatible GNSS receiver

YSI EXO2 S sonde platform

SonTek HydroSurveyor M9

Imagenex 3 frequency Sidescan sonar

5.8 GHz Wireless Coms

Health LED, Safety Kill Lanyard and IP67 User USB port

HYPACK MAX software allows for on-board data acquisition and data post-processing

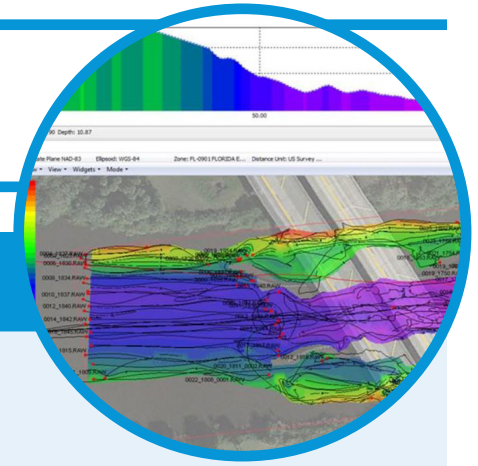
Foam filled unsinkable hull



**SeaRobotics Corporation**

SeaRobotics.com | 7765 SW Ellipse Way, Stuart, FL 34997, USA | Tel +1 (772) 742-3700 | info@searobotics.com

# HYCAT



## Specifications

Dimensions	Length: 5.9 ft (1.8m) Beam: 2.83 ft (.86m) Draft: 0.5ft (.15m) Weight: 53 kg (115.5 lbs)
Speed Range (survey speed)	ASV: 0 – 7.8 kts
Endurance	8.0 hrs @ 2 kts 6.0 hrs @ 3 kts 2.7 hrs @ 4 kts
Operational Sea State	Beaufort Wind Scale Identifier 4
Environmental Operating Conditions	Air Temperature: -20 to + 45 C Water Temperature: +4 C to + 32C
Propulsion System	2x 1KW BLDC Pocket Thrusters
Steering	Differential Thrust
Battery	1 x 1500 Whr 24VDC nom UN38.3 rated Li-ion Battery. Field swappable.
On-Board Electronics	6th Gen Intel Core i5 GHz processor with MS Windows 10. 512 GB (Solid State Hard Drive).
Mission Planning Tools	REALTIME mission planning, monitoring and data acquisition via ASV driver for HYPACK MAX.
Communications	Line of Sight Wi-Fi; 5.8GHz
Handheld Remote Controller	Ruggedized operator control unit with internal DC and external 120/240 VAC external power input. Joystick with softkeys to effortlessly switch between autonomous and RC control modes.
Software	HYPACK MAX, SonTek Hydro Surveyor, YSI EXO KOR



## SeaRobotics Corporation

SeaRobotics.com | 7765 SW Ellipse Way, Stuart, FL 34997, USA | Tel +1 (772) 742-3700 | info@searobotics.com