











SR UTILITY 2.5

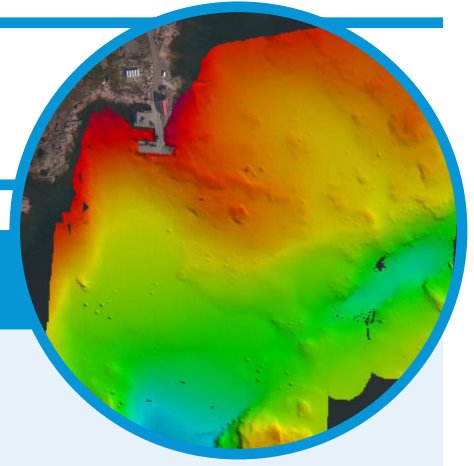
The SR-Utility 2.5 is from our class of intelligent, versatile, fully configurable ASVs for the marine industry professional that requires a platform that can quickly and easily configured to carry a wide range of sensors, instruments and tools.

The SR-Utility 2.5 offers full-day endurance with multibeam sonar, side scan sonar, or ADCPs, at survey speeds of 3-4 kts per charge. It can survey sea states 2-3, be deployed from vessels, beaches or rough terrain and offers a full suite of autonomous survey planning, fail safes, health monitoring and redundancy. The SR-Utility 2.5 was designed for use in coastal, shallow water, denied access areas, remote sites, and autonomous operations.

-  DISASTER RESPONSE
-  RESEARCH AND DEVELOPMENT
-  AUTONOMOUS SURVEY
-  SHALLOW WATER BATHYMETRY
-  STREAM GAUGING
-  HYDROGRAPHIC DATA ACQUISITION
-  CONFIGURABLE
-  WINCH DEPLOYMENT:
CASTING | ROVS | TOW FISH



SeaRobotics Corporation



SR-Utility 2.5 Specifications

Dimensions	Length: 2.48 m Beam: 1.24 m Draft: 0.13 m Weight: 70 kg Payload: 60 kg
Max Speed:	ASV: 7.5 kts
Endurance	11 hrs @ 3.0 kts 6.5 hrs @ 4.0 kts 20 hrs @ 3.0 kts 12.5 hrs @ 4.0 kts <i>w/Optional batteries</i>
Propulsion System	Electric
Communications	BLOS Options Cellular, Satellite. Various RF communication systems available. Real-time data viewing.
Sensors	Onboard i7 500 GB data acquisition computer Fixed IP camera. Optional payloads: Single beam echo sounders, Sub bottom Profilers, Multi-beam echo sounders, LIDAR, DGPS, RTK GPS, Vector GPS, Inertial navigation systems, Side scan sonar, Imaging sonar, Acoustic backscatter, ADCP/ADP, Multifunction Sonde, CTD, Transmissometers, Spectrometer, Magnetometer, Various USBLs, Numerous video systems
Software	HYPACK Compatible & QINSy