











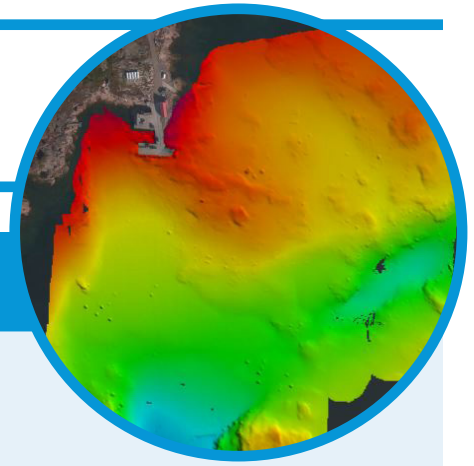
# SR UTILITY 3.6

The SR-Utility 3.6 is from our class of intelligent, versatile, fully configurable ASVs for the marine industry professional that requires a platform that can be quickly and easily configured to carry a wide range of sensors, instruments and tools. The SR-Utility 3.6 is collapsible to allow for shipping in standard pallet containers. The ASV has a heavy payload and can be utilized for disaster response or for surveyors wanting to integrate their own sensors. The SR-Utility 3.6 is compatible with numerous communication systems and third party software packages. The SR-Utility 3.6 can be deployed from vessels, beaches or rough terrain and was designed for use in inshore and offshore operations, coastal, shallow water, denied access areas, remote sites, and autonomous operations.

-  DISASTER RESPONSE
-  RESEARCH AND DEVELOPMENT
-  AUTONOMOUS SURVEY
-  SHALLOW WATER BATHYMETRY
-  STREAM GAUGING
-  HYDROGRAPHIC DATA ACQUISITION
-  CONFIGURABLE
-  WINCH DEPLOYMENT:  
*CASTING | ROVS | TOW FISH*



## SeaRobotics Corporation



## SR-Utility 3.6 Specifications

Dimensions	Length: 3.6 m Beam: 1.8 m Draft: 0.30 m Weight: 125 kg Payload: 90 kg
Max Speed:	ASV: 0 – 11 kts
Endurance	Dependent on payload, propulsion, sea state, etc
Propulsion System	Electric
Communications	BLOS Options Cellular, Satellite. Various RF communication systems available. Real-time data viewing.
Sensors	<b>Interchangeable Sensor Payload:</b> Fluorometers, DGPS, RTK GPS, Vector GPS, Inertial Navigation Sensors, Single Beam Echo, Sounders, Multi-beam Echo Sounders, LIDAR, Sub-Bottom Profilers, Side Scan Sonar, Imaging Sonar, CTD, Transmissometers, Spectrometer, Magnetometer, ADCP/ADP, USBLs, Video Systems
Software	HYPACK Compatible & QINSy